



Anti-Human HCCR-1 (a.a.310-330), Chicken-Polyclonal

Catalog No. PY-10293

Antigen species: Human

Host species: Chicken

Quantity: 100 μ g

Reactivity: Human

Form: Antigen affinity purified antibody

Applications tested: Western blot

Target description

HCCR was not only identified in cervical cancer tissues, but also found to be overexpressed in various human malignancies such as leukemia/lymphoma, breast, kidney, stomach, colon, liver and ovarian cancer. This molecule appeared to be a negative regulator of p53.

Antigen

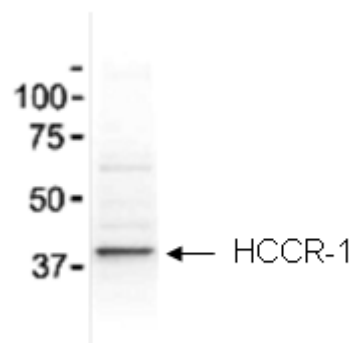
This polyclonal antibody was raised by immunizing chicken with E. coli derived protein (310-330 amino acids).

Application

ELISA, Western blotting, tissue or cell immunostaining. Recommended starting dilution for Western blot analysis is 1:3000, for tissue or cell staining is 1:200. Optimal working dilutions must be determined by the end user.

Related Products

1. Anti-HCCR-1(183-330) pAb (PY-10283).



30 μ g human liver cancer cell lysates as test antigen.

Western Blot Protocol:

1. Block membrane with 5% non-fat milk in PBS-T for 1 hour at room temperature or longer at 4°C.
2. Incubate membrane with IgY antibodies at dilution of 1: 10,000 with 1% milk in PBS-T at R.T. for 1 h.
3. Rinse 3 times with PBS-T, then wash membrane with PBS-T, 5 min each, total of 3 times.
4. Incubate with 2nd antibody (goat-anti-IgY/Fc-HRP) at dilution 1:10,000 for ECL (with 1% milk PBS-T) at R.T. for 1h.
5. Rinse 3 times with PBS-T, then wash with PBS-T, 5 min each with shaking, total of 3 times.
6. Perform ECL detection of signal using Pierce ECL kit.

Storage

It is supplied as antigen affinity purified antibody in lyophilized powder. Redissolve the powder with 100 microliter sterile water will restore to the original concentration 1mg/ml (1 \times PBS). Store at 4°C for short-term application. For long-term storage, aliquot and store at -20°C.

References

1. Histol Histopathol. 2005 Jul;20(3):999-1003.
2. Cancer Res. 2004 Aug 1;64(15):5434-41.