



Anti-V-erb-b2 erythroblastic leukemia viral oncogene homolog 2 (a.a.146-195), Chicken-Polyclonal Antibody

Catalog No. PY-10256

Quantity: 100µg

Applications tested: Western Blot, IHC

Antigen species: Human

Reactivity: Human, cat, dog

Host species: Chicken

Form: Antigen affinity purified antibody

Target description

v-erb-b2 erythroblastic leukemia viral oncogene homolog 2, neuro/glioblastoma derived oncogene homolog; NEU, NGL, HER2, TKR1, HER-2, ERBB2.

ERBB receptor tyrosine kinases have important roles in human cancer. The expression or activation of epidermal growth factor receptor and ERBB2 are altered in many epithelial tumors, and clinical studies indicate that they have important roles in tumor aetiology and progression.

Antigen

This polyclonal antibody was raised by immunizing chicken with E coli-derived fusion protein (human Her2: aa146-195)

Application

Western blotting, tissue staining.

Recommended starting dilution for Western blot analysis is 1:2000, for IHC staining is 1:200. Optimal working dilutions must be determined by the end user.

Related Products

1. Anti-VEGFR3, Rabbit pAb (GB-30015)
2. Anti-Vascular endothelial growth factor (VEGF), Rabbit pAb (GB-10050)
3. Anti-Vascular endothelial growth factor (VEGF), Chicken pAb (PY-10031)
4. Anti-v-erb-b2 erythroblastic leukemia viral oncogene homolog 2 (Her2/neu a.a. 153-433), Chicken pAb (PY-10254)
5. Anti-Erythropoietin(EPO),pAb (PY-10218)

KDa

34 —

24 —

17 —

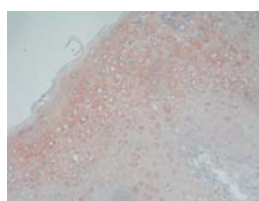
← Her2/neu fusion protein

E coli-derived fusion protein as test antigen

Western Blot protocol:

1. Block membrane with 5% non-fat milk in PBS-T for 1 hour at room temperature or longer at 4°C.
2. Incubate membrane with IgY antibodies at dilution of 1: 3,000 with 1% milk in PBS-T at R.T. for 1 h.
3. Rinse 3 times with PBS-T, then wash membrane with PBS-T, 5 min each, total of 3 times.
4. Incubate with 2nd antibody (goat-anti-IgY/Fc-HRP) at dilution 1: 10,000 for ECL (with 1% milk PBS-T) at R.T. for 1 h.
5. Rinse 3 times with PBS-T, then wash with PBS-T, 5 min each with shaking, total of 3 times.
6. Perform ECL detection of signal using Pierce ECL kit.

AEC Tissue Staining:



Oral cancer epithelium
Her2/neu (1: 150)



Oral cancer epithelium
Her2/neu, negative

Storage

It is supplied as antigen affinity purified antibody in lyophilized powder. Redissolve the powder with 100 microliter sterile water will restore to the original concentration 1mg/ml (1×PBS). Store at 4°C for short-term application. For long-term storage, aliquot and store at -20°C.

References

1. Mariani A., Sebo T.J., Katzmman J.A., Riehle D.L., Dowdy S.C., Keeney G.L., Lesnick T.G., Podratz K.C. HER-2/neu overexpression and hormone dependency in endometrial cancer: analysis of cohort and review of literature. *Anticancer Res.* 2005 Jul-Aug; 25(4):2921-7.