



Anti-Interleukin 16, Chicken-Polyclonal Antibody

Catalog No. PY-10006

Antigen species: Human

Host species: Chicken

Quantity: 100 μ g

Reactivity: Human

Form: Antigen affinity purified antibody

Applications tested: ELISA

Target description

IL-16 stimulates a migratory response in CD4⁺ lymphocytes, monocytes, and eosinophils. It also induces T-lymphocyte expression of interleukin 2 receptor. IL-16 is a ligand for CD4.

Antigen

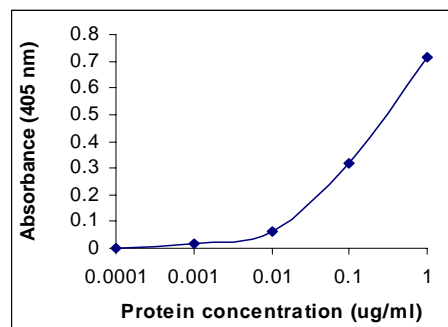
This polyclonal antibody was raised by immunizing chicken with IL-16 recombinant protein (503-631 amino acids).

Application

ELISA, Western blotting, tissue or cell immuno-staining. The recommended concentration for ELISA is 0.5-1 μ g/ml. Optimal working dilutions must be determined by the end user.

Related Products

1. Anti-Interleukin-1 beta, pAb (PY-10003)
2. Anti-Interleukin-8, pAb (PY-10004)
3. Anti-Interleukin-10, pAb (PY-10005)
4. Anti-Interleukin-17, pAb (PY-10007)
5. Anti- Interleukin-20 short form, mAb (GB-52020)



Recombinant protein as test antigen.

Direct ELISA:

Affinity-Purified anti-IL-16 IgY as primary antibody (0.1 μ g/ml), and Goat anti-IgY-HRP as 2nd antibody.

Storage

It is supplied as antigen affinity purified antibody in lyophilized powder. Redissolve the powder with 100 microliter sterile water will restore to the original concentration 1mg/ml (1 \times PBS). Store at 4 $^{\circ}$ C for short-term application. For long-term storage, aliquot and store at -20 $^{\circ}$ C.

References:

1. Qi, J.C. *et al.* IL-16 regulation of human mast cells/basophils and their susceptibility to HIV-1. *J. Immunol.* 168 (8), 4127-4134 (2002)

FOR RESEARCH USE ONLY AND NOT INTENDED FOR DIAGNOSTIC OR THERAPEUTIC USE